

# e.DO update How To

---

# Index

---

- [Update e.DO From USB with App \(from 2.5.0 to 3.2.1 or from 4.0.0 to higher\)](#)
- [Update e.DO old versions to 4.0.0 \(or higher\)](#)
- [Accessing e.DO with version  \$\geq\$  4.0.0 from command line](#)
- [Useful instructions from command line](#)

# Update e.DO From USB with App - prerequisites

To perform this operation you must have either:

- an e.DO with a version between 2.5.0 and 3.2.1
- or 4.0.0 and higher.

If you have an e.DO version lower than 4.0.0 and you want to update to a 4.0.0 version or major go to [Update from versions lower than 4.0.0](#).

## WHAT YOU NEED

An e.DO Control Application (view the compatibility table on [comau.com/it/e-do-apps](http://comau.com/it/e-do-apps))

An USB Key, preferably formatted as fat32.

The update files, that you can find on [comau.com/it/e-do-apps](http://comau.com/it/e-do-apps)



# Update e.DO From USB with App

Follow these step in order to update your e.DO From USB KEY:

1. Download the update package from [edo.cloud/apps](http://edo.cloud/apps), unpack the .zip and move the files into the USB key in the root level.
2. Insert the USB key inside e.DO
3. Open the e.DO Control Application from your tablet or pc, then go to **Settings** and **System Update**
4. You can now follow the wizard and update your e.DO



**End of procedure**

## Update from versions lower than 4.0.0 to 4.0.0 (or later)

---

The new software version 4.0.0 of our e.DO and e.DO Cube has several updates and modification on the Operative System to improve your experience and enhance future possibilities.

Due to the depth of changes, unfortunately, it is not possible to update from version 3.X.X to 4.0.0 with the usb drive, but it will be necessary to flash the SD card with the new software.

If you have an e.DO cube you should follow the instructions [on next slide](#) first, otherwise you can directly go to [Software Installation](#)

Note: the usb-drive update is available from 4.0.0 to later versions as described [here](#).

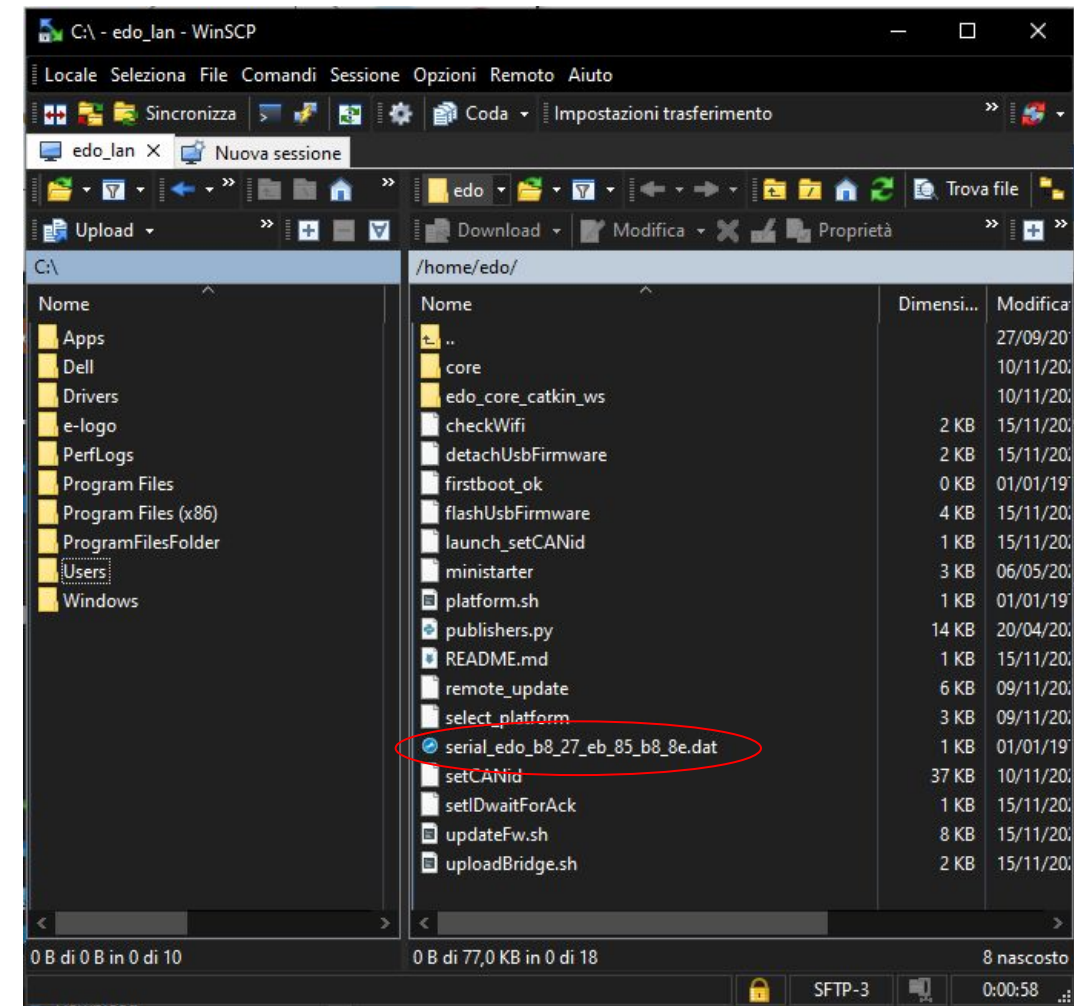
# Save your license (e.DO Cube only)

On e.DO Cube you need to do some steps before installing the new version, otherwise you will lose your license and the possibility to access to the virtual app:

1. Connect to your e.DO with [winSCP](#) user: **edo** and pwd: **raspberrry**
  - a. If you are connected via Wi-Fi the ip address is 192.168.12.1 and port is 22
  - b. If you are connected via ETH cable the ip address is 10.42.0.49 and port is 22

Note: to have more information about winSCP check the documentation linked in the next slide.

2. In /home/edo you can find your license as "serial\_edo\_xx\_xx\_xx\_xx\_xx\_xx.dat";
3. Copy the license file to your computer (either drag&drop or copy/paste using winSCP).



# Software Installation

In order to install the new software version, either regarding e.DO or e.DO Cube, please follow the steps in “[e.DO SW loading procedure](#)”





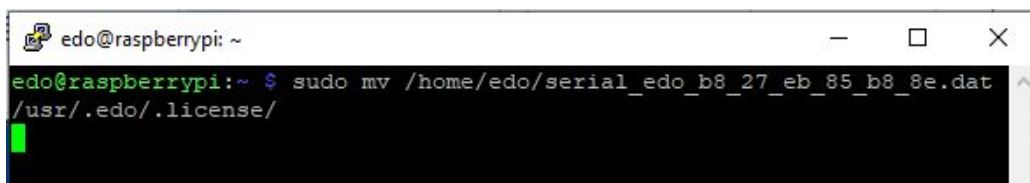
# Copy your license (e.DO Cube only)

After installing the 4.0.0 version of the software you need to copy the license file back to the raspberry:

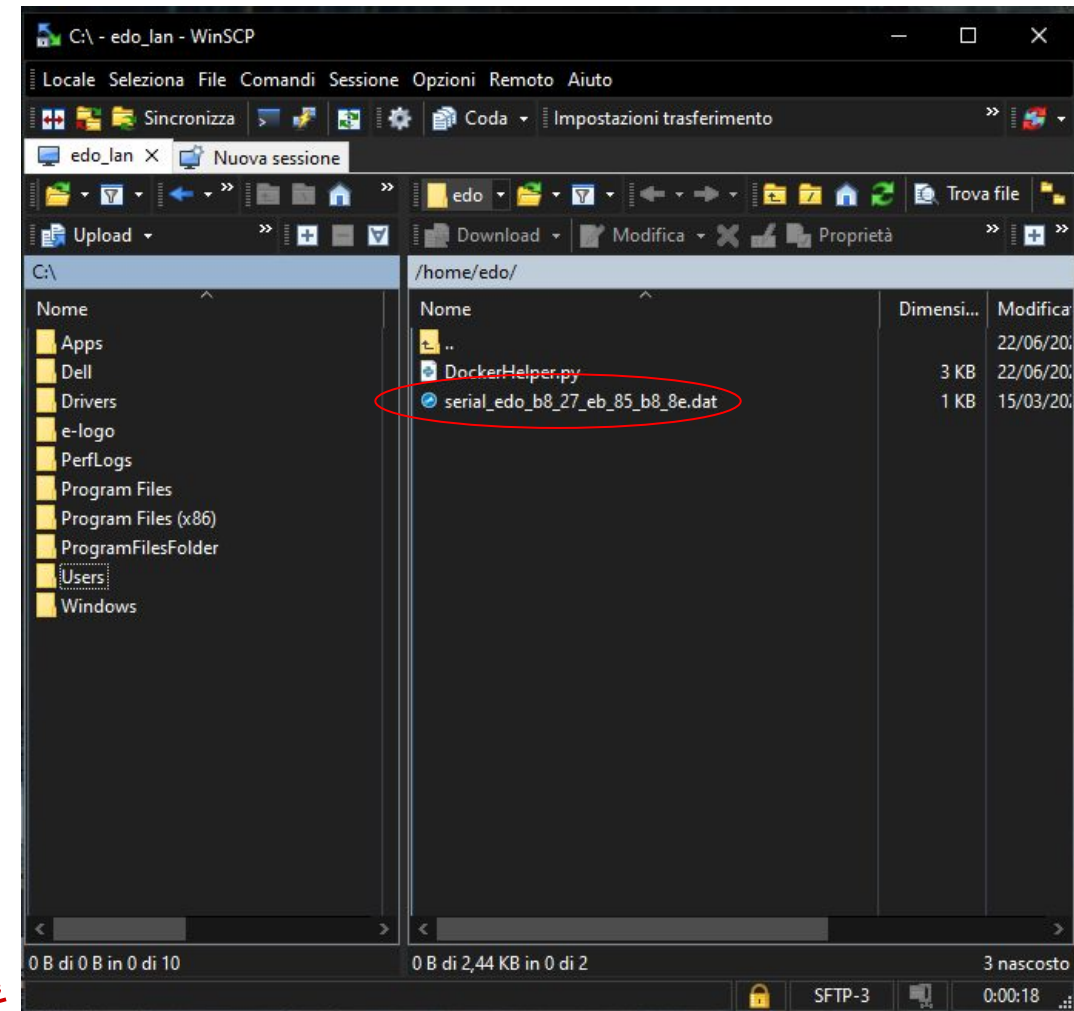
1. From your pc, using winSCP, copy the license file in /home/edo/;
2. Open PUTTY and connect to your raspberry pi using SSH as connection type;
3. Use the same user and pwd you used with winSCP;
4. run the following command:

```
sudo mv /home/edo/serial_edo_xx_xx_xx_xx_xx_xx.dat /usr/.edo/.license/
```

replace all the “x” in the command above with the letters and numbers in your file, like in the example below



```
edo@raspberrypi: ~  
edo@raspberrypi:~$ sudo mv /home/edo/serial_edo_b8_27_eb_85_b8_8e.dat /usr/.edo/.license/
```



**End of procedure**



# Accessing e.DO from command line

---

e.DO software is now running on a dockerized container, if you were used to run ROS command from SSH you now need an additional step in order to access the e.DO operative system.

You need to run the following command from your SSH session:

```
edo@raspberrypi:~$ sudo docker exec -it edo bash
```

# Useful commands

---

After accessing the e.DO operative system as explained in the previous slide, it is possible to run the following command when needed:

- Axes firmware update (NOT run on e.DO Cube):

```
edo@raspberrypi:~$ ./updateFW.sh
```

The COMAU logo is displayed in a large, white, sans-serif font within a white rectangular box. The background of the entire slide is a solid blue color with a faint, white line-art illustration of a ship's hull and internal mechanical components.

Motor behind imagination

A brand of  STELLANTIS